

## Anti-ITGAE antibody

<b>Cat. No.</b>	ml122552
<b>Package</b>	25 µl/100 µl/200 µl
<b>Storage</b>	-20°C, pH7.4 PBS, 0.05% NaN <sub>3</sub> , 40% Glycerol

### Product overview

<b>Description</b>	Anti-ITGAE rabbit polyclonal antibody
<b>Applications</b>	ELISA, WB, IHC
<b>Immunogen</b>	Fusion protein of human ITGAE
<b>Reactivity</b>	Human
<b>Content</b>	0.4 mg/ml
<b>Host species</b>	Rabbit
<b>Ig class</b>	Immunogen-specific rabbit IgG
<b>Purification</b>	Antigen affinity purification

### Target information

<b>Symbol</b>	ITGAE
<b>Full name</b>	integrin, alpha E (antigen CD103, human mucosal lymphocyte antigen 1; alpha polypeptide)
<b>Synonyms</b>	CD103; HUMINAE
<b>Swissprot</b>	P38570

### Target Background

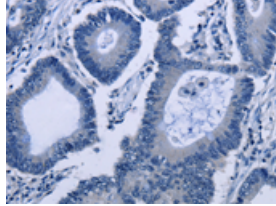
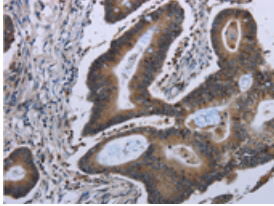
Integrins are heterodimeric integral membrane proteins composed of an alpha chain and a beta chain. This gene encodes an I-domain-containing alpha integrin that undergoes post-translational cleavage in the extracellular domain, yielding disulfide-linked heavy and light chains. In combination with the beta 7 integrin, this protein forms the E-cadherin binding integrin known as the human mucosal lymphocyte-1 antigen. This protein is preferentially expressed in human intestinal intraepithelial lymphocytes (IEL), and in addition to a role in adhesion, it may serve as an accessory molecule for IEL activation.

订购热线: 4008-898-798

### Applications

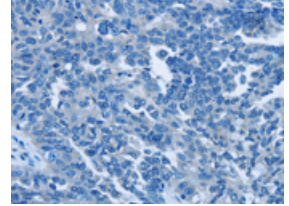
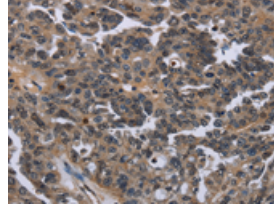
#### Immunohistochemistry

Predicted cell location: Cytoplasm  
Positive control: Human colon cancer  
Recommended dilution: 50-200



The image on the left is immunohistochemistry of paraffin-embedded Human colon cancer tissue using ml122552(ITGAE Antibody) at dilution 1/50, on the right is treated with fusion protein. (Original magnification: ×200)

Predicted cell location: Cytoplasm  
Positive control: Human ovarian cancer  
Recommended dilution: 50-200

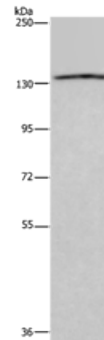


The image on the left is immunohistochemistry of paraffin-embedded Human ovarian cancer tissue using ml122552(ITGAE Antibody) at dilution 1/50, on the right is treated with fusion protein. (Original magnification: ×200)

#### Western blotting

Predicted band size: 130 kDa  
Positive control: LoVo cells  
Recommended dilution: 200-1000

Gel: 6%SDS-PAGE  
Lysate: 40 µg  
Lane: LoVo cells  
Primary antibody: ml122552(ITGAE Antibody) at dilution 1/550  
Secondary antibody: Goat anti rabbit IgG at 1/8000 dilution  
Exposure time: 3 minutes



#### ELISA

Recommended dilution: 1000-2000

联系电话: 4008-898-798, 021-61725725

联系QQ: 2881505695, 2881505696

邮箱: mlbio\_cn@yeah.net

网址: www.mlbio.cn