

Anti-MLLT10 antibody

Cat. No.	ml221529
Package	25 µl/100 µl/200 µl
Storage	-20°C, pH7.4 PBS, 0.05% NaN ₃ , 40% Glycerol

Product overview

Description	Anti-MLLT10 rabbit polyclonal antibody
Applications	ELISA, WB
Immunogen	Full length fusion protein
Reactivity	Human
Content	0.96 mg/ml
Host species	Rabbit
Ig class	Immunogen-specific rabbit IgG
Purification	Antigen affinity purification

Target information

Symbol	MLLT10
Full name	myeloid/lymphoid or mixed-lineage leukemia; translocated to, 10
Synonyms	AF10
Swissprot	P55197

Target Background

This gene encodes a transcription factor and has been identified as a partner gene involved in several chromosomal rearrangements resulting in various leukemias. Multiple transcript variants encoding different isoforms have been found for this gene.

订购热线: 4008-898-798

Applications

Western blotting

Predicted band size: 113 kDa

Positive control: K562 cell lysate

Recommended dilution: 200-1000

Gel: 6% SDS-PAGE

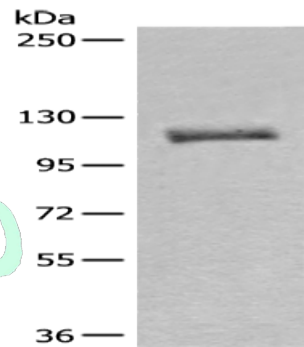
Lysate: 40 μ g

Lane: K562 cell lysate

Primary antibody: ml221529 (MLLT10 Antibody) at dilution 1/200

Secondary antibody: Goat anti rabbit IgG at 1/8000 dilution

Exposure time: 20 seconds



ELISA

Recommended dilution: 5000-10000

联系电话: 4008-898-798, 021-61725725

联系QQ: 2881505695, 2881505696

邮箱: mlbio_cn@yeah.net

网址: www.mlbio.cn