

## Anti-NDUFS1 antibody

<b>Cat. No.</b>	ml222747
<b>Package</b>	25 µl/100 µl/200 µl
<b>Storage</b>	-20°C, pH7.4 PBS, 0.05% NaN <sub>3</sub> , 40% Glycerol

### Product overview

**Description** Anti-NDUFS1 rabbit polyclonal antibody

**Applications** ELISA, WB, IHC

**Immunogen** Fusion protein of human NDUFS1

**Reactivity** Human, Mouse, Rat

**Content** 0.4 mg/ml

**Host species** Rabbit

**Ig class** Immunogen-specific rabbit IgG

**Purification** Antigen affinity purification

### Target information

**Symbol** NDUFS1

**Full name** NADH dehydrogenase (ubiquinone) Fe-S protein 1, 75kDa (NADH-coenzyme Q reductase)

**Synonyms** CI-75k; CI-75Kd; PRO1304

**Swissprot** P28331

### **Target Background**

The protein encoded by this gene belongs to the complex I 75 kDa subunit family. Mammalian complex I is composed of 45 different subunits. It locates at the mitochondrial inner membrane. This protein has NADH dehydrogenase activity and oxidoreductase activity. It transfers electrons from NADH to the respiratory chain. The immediate electron acceptor for the enzyme is believed to be ubiquinone. This protein is the largest subunit of complex I and it is a component of the iron-sulfur (IP) fragment of the enzyme.

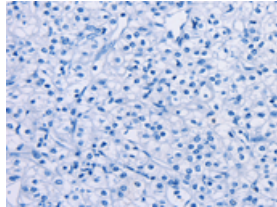
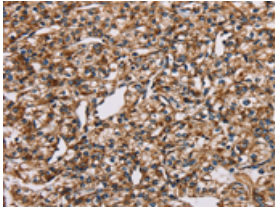
## Applications

### Immunohistochemistry

Predicted cell location: Cytoplasm

Positive control: Human prostate cancer

Recommended dilution: 50-200

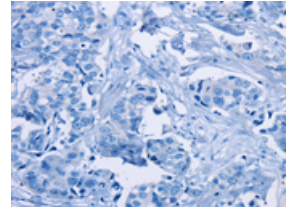
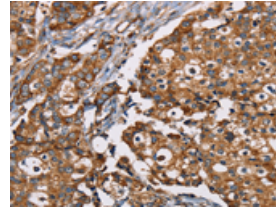


The image on the left is immunohistochemistry of paraffin-embedded Human prostate cancer tissue using ml222747(NDUFS1 Antibody) at dilution 1/35, on the right is treated with fusion protein. (Original magnification: ×200)

Predicted cell location: Cytoplasm

Positive control: Human breast cancer

Recommended dilution: 50-200



The image on the left is immunohistochemistry of paraffin-embedded Human breast cancer tissue using ml222747(NDUFS1 Antibody) at dilution 1/35, on the right is treated with fusion protein. (Original magnification: ×200)

### Western blotting

Predicted band size:79 kDa

Positive control:293T, PC3, hela, Jurkat and Raji cells

Recommended dilution: 500-2000

订购热线: 4008-898-798

Gel: 10%SDS-PAGE

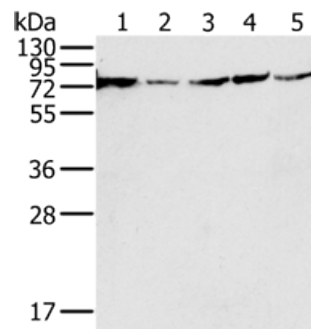
Lysate: 40  $\mu$ g

Lane 1-5: 293T cells, PC3 cells, hela cells, Jurkat cells, Raji cells

Primary antibody: ml222747(NDUFS1 Antibody) at dilution 1/650

Secondary antibody: Goat anti rabbit IgG at 1/8000 dilution

Exposure time: 3 seconds



## ELISA

Recommended dilution: 2000-5000

联系电话: 4008-898-798, 021-61725725

联系QQ: 2881505695, 2881505696

邮箱: [mlbio\\_cn@yeah.net](mailto:mlbio_cn@yeah.net)

网址: [www.mlbio.cn](http://www.mlbio.cn)